

This drawing is the property of FPCR Environment and Design Ltd and is issued on the condition it is not reproduced, retained or disclosed to any unauthorised person, either wholly or in part without written consent of FPCR Environment and Design Ltd.

Aerial Imagery © 2022 Bluesky, Getmapping plc, Infoterra Ltd and Bluesky, Maxar Technologies, Map data © 2022 Google

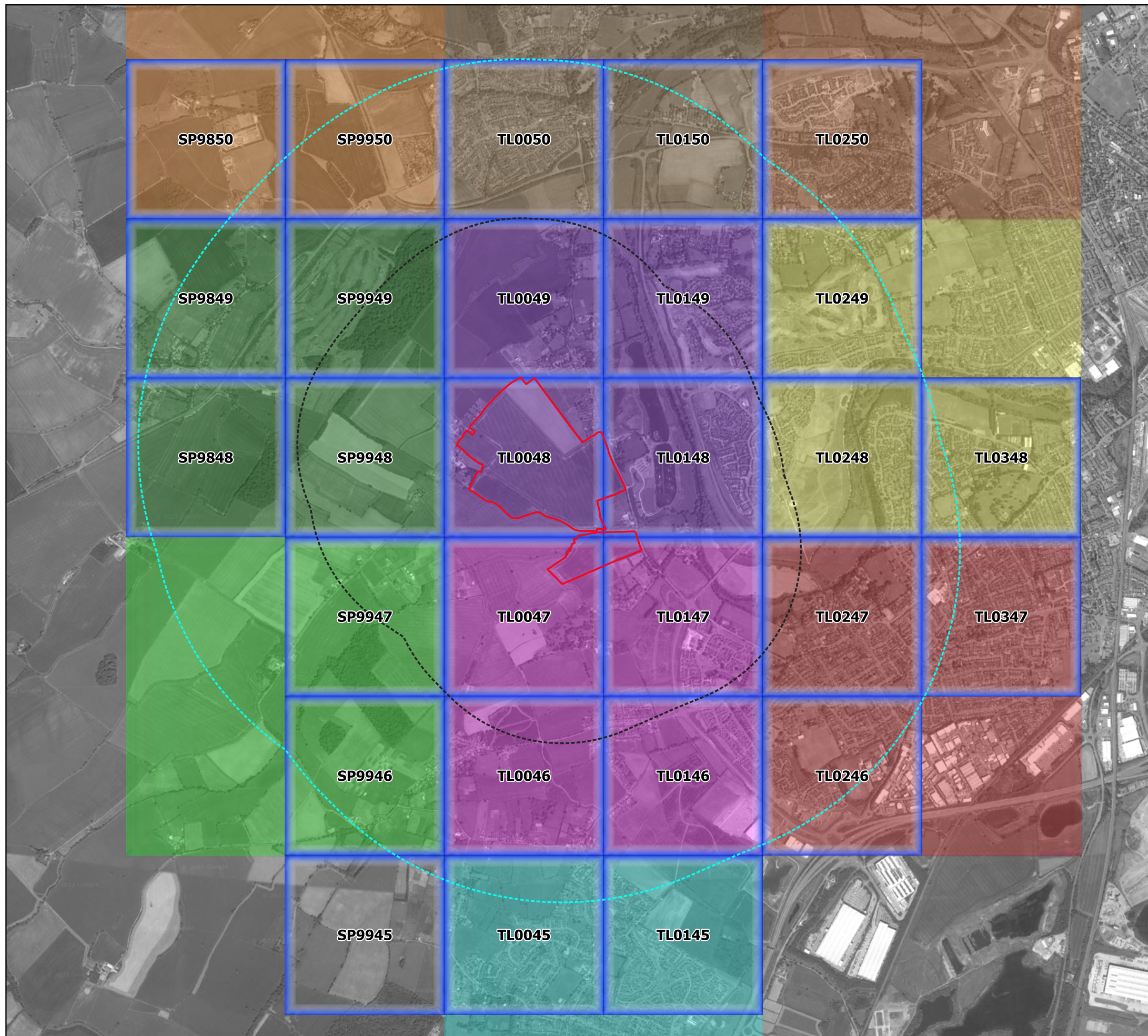
### Key

 Site Boundary	 1km Buffer	 2km Buffer
<b>Notable Invertebrates</b>		
 Agnocris reclairei	 Emerald Damselfly	 Rosy Minor
 Anthocoris visci	 Feathered Gothic	 Rosy Rustic
 Balsam Carpet	 Garden Dart	 Rustic
 Beaded Chestnut	 Ghost Moth	 Sallow
 Blood-vein	 Giant Water-veener	 Saltmarsh Knot-horn
 Brindled Beauty	 Green-brindled Crescent	 Scarce Libellula
 Brindled Groundling	 Grey Dagger	 Shaded Broad-bar
 Broom Moth	 Gypsy Moth	 Shoulder-striped Wainscot
 Brown-spot Pinion	 Horehound Long-horn	 Small Emerald
 Buff Ermine	 Jersey Tiger	 Small Heath
 Bulrush Veneer	 Knot Grass	 Small Phoenix
 Centre-barred Sallow	 Lackey	 Small Ranunculus
 Cinnabar	 Large Nutmeg	 Small Square-spot
 Corixa panzeri	 Large Wainscot	 Spinach
 Cramp-Ball Fungus Weevil	 Latticed Heath	 Spindle Knot-horn
 Crescent	 Leptocerus lusitanicus	 Sprawler
 Dark Spinach	 Mallow Groundling	 Sulphur Pearl
 Deep-brown Dart	 Mottled Rustic	 Thatch Groundling
 Dot Moth	 Mouse Moth	 Toadflax Brocade
 Downy Emerald	 Mullein Wave	 White Ermine
 Dusky Brocade	 Oak Hook-tip	 White-letter Hairstreak
 Dusky Thorn	 Pinalitus visciola	
 Eastern Piercer	 Powdered Quaker	



This drawing is the property of FPCR Environment and Design Ltd and is issued on the condition it is not reproduced, retained or disclosed to any unauthorised person, either wholly or in part without written consent of FPCR Environment and Design Ltd.

Aerial Imagery © 2022 Bluesky, Getmapping plc, Infoterra Ltd and Bluesky, Maxar Technologies, Map data © 2022 Google



### Key

Site Boundary

1km Buffer

2km Buffer

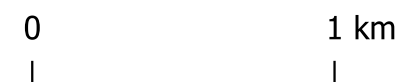
#### Species Records of 1km Accuracy

1km Grid Square (with reference)

#### Species Records of 2km Accuracy

- |       |       |
|-------|-------|
| SP95V | SP94Y |
| TL05A | TL04D |
| TL05F | TL04I |
| SP94Z | TL04C |
| TL04E |       |
| TL04J |       |

For species lists see Appendix A



client  
Barratt Homes

project  
Land at Box End,  
West of Bedford

drawing title  
SITE LOCATION AND CONSULTATION RESULTS PLAN -  
SPECIES RECORDS OF 1KM & 2KM ACCURACY

scale @ A3  
1:25000

drawn  
LG / VF

issue  
6/7/2022

drawing / figure number  
**Figure 2d**

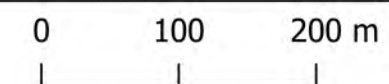
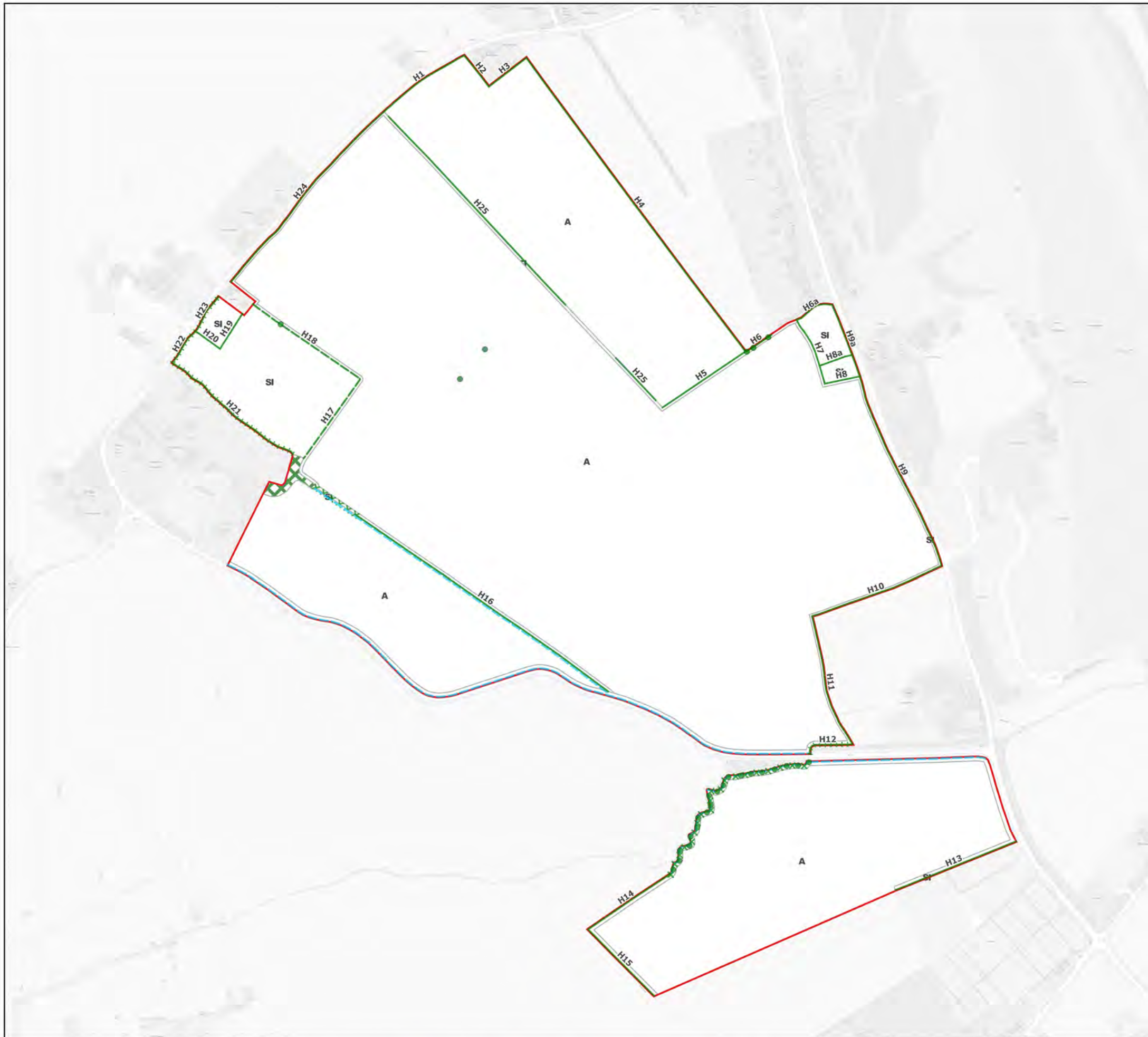
rev  
**Rev A**

This drawing is the property of FPCR Environment and Design Ltd and is issued on the condition it is not reproduced, retained or disclosed to any unauthorised person, either wholly or in part without written consent of FPCR Environment and Design Ltd.

Ordnance Survey material - Crown Copyright. All rights reserved.  
Licence Number: 100019980

### Key

- Site Boundary
- A Cultivated/disturbed land - arable
- SI Poor semi-improved grassland
- Scrub - dense/continuous
- Hedgerow (with reference)
- Hedgerow with trees (with reference)
- Dry ditch
- Defunct hedgerow (with reference)
- Scrub - scattered line
- Broadleaved tree




 client  
Barratt Homes  
 project  
Land at Box Lane,  
West of Bedford  
 drawing title  
PHASE 1 HABITAT PLAN  
 scale @ A3  
1:5500  
 drawing / figure number  
**Figure 3**  
 drawn  
LG / VF  
 base  
7/7/2022  
 rev  
**Rev A**

Appendix A: Species Records of 1km Accuracy

1km Grid Square	Species Present
SP9850	Sparrowhawk
SP9950	Badger; Bee orchid; Cinnabar; Red kite
TL0050	Bee orchid; Black-headed gull; Bullfinch; Common tern; Cuckoo; Dunnock; Fieldfare; Goldcrest; Goldfinch; Greenfinch; Grey wagtail; Greylag goose; Hedgehog; Hobby; House martin; House sparrow; Jersey tiger; Kestrel; Kingfisher; Lapwing; Lesser redpoll; Lesser spotted woodpecker; Little egret; Mallard; Mistle thrush; Moorhen; Mute swan; Red kite; Redwing; Reed bunting; Rook; Sand martin; Shaded broad-bar; Siskin; Skylark; Song thrush; Sparrowhawk; Starling; Swallow; Swift; Tawny owl; Unidentified bat sp.; White/Pied wagtail; Willow warbler; Wren; Yellowhammer
TL0150	Badger; Black-headed gull; Common tern; Cuckoo; Dunnock; Dusky thorn; Field scabious; Goldcrest; Goldfinch; Grey wagtail; Kingfisher; Little egret; Mallard; Marsh tit; Mistle thrush; Moorhen; Mute swan; Oystercatcher; Red kite; Red-flanked bluetail; Reed bunting; Sallow; Sand martin; Scots pine; Small heath; Song thrush; Sparrowhawk; Swift; Treecreeper; Wren
TL0250	Common tern; Dunnock; Goldfinch; Grass snake; Hoary plantain; Hobby; House sparrow; Kestrel; Lapwing; Moorhen; Red kite; Ring-necked parakeet; Skylark; Swift; Wren
SP9849	Bee orchid; Dunnock; Goldcrest; Golden plover; Goldfinch; Greenfinch; Grey partridge; Hobby; Mistle thrush; Red kite; Rook; Swallow; Waxwing; Wren
SP9949	Bee orchid; Black-headed gull; Blood-vein; Chinese muntjac; Fieldfare; Goldcrest; Goldfinch; Marsh tit; Mistle thrush; Moorhen; Nuthatch; Red kite; Redwing; Rook; Skylark; Song thrush; Stock dove; Wheatear; Willow warbler; Wren
TL0049	Bee orchid; Brown hare; Chinese water deer; Cinnabar; Shaded broad-bar; Slender tare
TL0149	Bee orchid; Black-headed gull; Bluebell; Bullfinch; Cetti's warbler; Common crossbill; Common gull; Common tern; Cuckoo; Dunnock; Dusky-lemon sallow; Fieldfare; Fine-leaved water-dropwort; Gadwall; Goldcrest; Goldeneye; Great white egret; Greenfinch; Greylag goose; Herring gull; Hoary plantain; House martin; House sparrow; Jersey tiger; Kestrel; Kingfisher; Knot grass; Lapwing; Lesser black-backed gull; Lesser redpoll; Little grebe; Mallard; Mare's-tail; Meadow pipit; Mistle thrush; Moorhen; Mute swan; Otter; Oystercatcher; Pochard; Red kite; Red-flanked bluetail; Redshank; Redwing; Reed bunting; Ringed plover; Rook; Sand martin; Scots pine; Shoveler; Siskin; Skylark; Small heath; Snipe; Song thrush; Sparrowhawk; Starling; Stock dove; Swallow; Swift; Teal; Treecreeper; Upright spurge; Water rail; White comfrey; White/Pied wagtail; Wigeon; Wild strawberry; Willow warbler; Wren

<b>1km Grid Square</b>	<b>Species Present</b>
TL0249	Corn bunting; Great crested newt; House sparrow; Jersey tiger; Linnet; Little grebe; Moorhen; Skylark; Spotted flycatcher; Yellowhammer
SP9848	Brown long-eared; Hedgehog; Jersey tiger; Kestrel; Redwing; Swift
SP9948	Badger
TL0048	Grey partridge; Lapwing
TL0148	Bee orchid; Black-headed gull; Cinnabar; Common gull; Common scoter; Common tern; Fieldfare; Goldfinch; Greater dodder; Grey wagtail; Greylag goose; Hobby; House martin; Jersey tiger; Kestrel; Kingfisher; Lapwing; Linnet; Mallard; Meadow pipit; Mistle thrush; Moorhen; Mute swan; Osprey; Oystercatcher; Red kite; Reed bunting; Shaded broad-bar; Skylark; Small heath; Starling; Swallow; White/Pied wagtail; Wren
TL0248	Black-headed gull; Blood-vein; Cinnabar; Goldfinch; Grass snake; Greenfinch; House sparrow; Latticed heath; Mallard; Moorhen; Rook; Small heath; Small ranunculus; Sparrowhawk; Starling
TL0348	Black-headed gull; Goldcrest; Goldfinch; House sparrow; Jersey tiger; Redwing; River water-dropwort; Rook; Starling
SP9947	Cuckoo; Garden tiger; Little owl
TL0047	Barn owl; Black-headed gull; Corn bunting; Dunnock; Field scabious; Goldfinch; Grey partridge; Hobby; House sparrow; Kestrel; Linnet; Meadow pipit; Rook; Skylark; Sparrowhawk; Starling; Stoat; Stock dove; Tawny owl; Wren; Yellowhammer
TL0147	Barn owl; Cinnabar; Goldfinch; Greenfinch; Grey wagtail; Kestrel; Kingfisher; Redwing; Rook; Scarce libellula; Shaded broad-bar; Siskin; Small heath; Starling; Wren
TL0247	Black-headed gull; Cinnabar; Common calamint; Common gull; Common tern; Common toad; Dunnock; Goldfinch; Grass snake; Greater dodder; Greenfinch; Hedgehog; House martin; House sparrow; Kestrel; Kingfisher; Lesser black-backed gull; Mallard; Mistle thrush; Moorhen; Mute swan; Reed bunting; Rook; Short-eared owl; Siskin; Skylark; Small heath; Song thrush; Starling; Swift; Toadflax brocade; Treecreeper; Wren
TL0347	Common sandpiper; Corn bunting; Green sandpiper; Herring gull; House sparrow; Jersey tiger; Kestrel; Peregrine; Starling; Unidentified bat sp.; Waxwing; Whinchat; White/Pied wagtail
SP9946	Grey partridge; Turtle dove

1km Grid Square	Species Present
TL0046	Barn owl; Black-headed gull; Brindled groundling; Goldcrest; Goldfinch; Grey partridge; House martin; Kestrel; Lapwing; Little owl; Mallard; Moorhen; Red kite; Reed bunting; Skylark; Song thrush; Sparrowhawk; Spindle knot-horn; Swallow; Tawny owl; Willow warbler; Wren; Yellowhammer
TL0146	Barn owl; Black-headed gull; Black-tailed godwit; Bullfinch; Cinnabar; Common gull; Common sandpiper; Cuckoo; Dunnock; Fieldfare; Golden plover; Goldfinch; Grasshopper warbler; Greenfinch; Grey partridge; Greylag goose; Herring gull; Hobby; House martin; Jack snipe; Kestrel; Lapwing; Lesser black-backed gull; Lesser redpoll; Linnet; Little egret; Little grebe; Little owl; Little-ringed plover; Mallard; Meadow pipit; Mediterranean gull; Mute swan; Oystercatcher; Peregrine; Pintail; Red kite; Red-crested pochard; Redshank; Redwing; Reed bunting; Ringed plover; Rook; Sand martin; Short-eared owl; Shoveler; Siskin; Skylark; Snipe Song thrush; Sparrowhawk; Starling; Stock dove; Stonechat; Swallow; Swift; Teal; Tufted duck; Wheatear; Whinchat; White/Pied wagtail; Wigeon; Willow warbler; Wren; Yellow-legged gull; Yellowhammer
TL0246	Black-headed gull; Dunnock; Goldfinch; Kestrel; Kingfisher; Lapwing; Mallard; Moorhen; Mute swan; Reed bunting; Short-eared owl; Skylark; Song thrush; Starling; White/Pied wagtail; Wren
SP9945	Ghost moth; Small heath
TL0045	Black kite; Black-headed gull; Brambling; Brown hare; Bullfinch; Chinese water deer; Cuckoo; Dunnock; Fieldfare; Goldfinch; Greenfinch; Grey partridge; Hobby; House martin; House sparrow; Kestrel; Lapwing; Linnet; Little owl; Mallard; Moorhen; Oystercatcher; Red kite; Rook; Siskin; Skylark; Small heath; Song thrush; Sparrowhawk; Starling; Swallow; Swift; Tawny owl; White/Pied wagtail; Wren; Yellowhammer
TL0145	Barn owl; Beaded chestnut; Black-headed gull; Blood-vein; Buff ermine; Centre-barréd sallow; Cinnabar; Common gull; Common sandpiper; Common tern; Cuckoo; Dot moth; Gadwall; Goldcrest; Goldfinch; Greenfinch; Grey partridge; Grey wagtail; Greylag goose; Herring gull; Hobby; House martin; House sparrow; Jersey tiger; Kestrel; Knot grass; Lapwing; Lesser black-backed gull; Little egret; Little grebe; Little owl; Little ringed plover; Mallard; Meadow pipit; Moorhen; Mute swan; Oak hook-tip; Oystercatcher; Pochard; Redshank; Reed bunting; Rook; Shoveler; Skylark; Starling; Swallow; Swift; Teal; Tufted duck; Wheatear; White/Pied wagtail; Wigeon; Willow warbler; Wren; Yellow-legged gull; Yellowhammer

**Appendix XXX: Species Records of 2km Accuracy**

2km Grid Square	Species Present
SP95V	Brown hare; Chinese muntjac; Hedgehog; Tawny owl
TL05A	Chinese muntjac; Common tern; Dunnock; Fieldfare; Goldcrest; Goldfinch; Greenfinch; Grey wagtail; Greylag goose; Hedgehog; Hoary plantain; House martin; House sparrow; Kingfisher; Lapwing; Little owl; Mallard; Mistle thrush; Mute swan; Nuthatch; Pipistrelle sp.; Red kite; Reed bunting; Rook; Sand martin; Skylark; Song thrush; Sparrowhawk; Starling; Stock dove; Swallow; Swift; Weasel; Willow warbler; Wren; Yellowhammer
TL05F	Chinese muntjac; Field gromwell; Field scabious; Sparrowhawk
SP94Z	Badger; Chinese muntjac; Curlew; Spotted flycatcher; Stoat
TL04E	Brown hare; Chinese muntjac; Hobby
TL04J	Beaded chestnut; Blood-vein; Dusky thorn; Large nutmeg; Mottled rustic; Rustic; Small emerald
SP94Y	Corn bunting; Cuckoo; Grey partridge; Little owl; Meadow pipit; Nuthatch; Treecreeper
TL04D	Brown hare; Little owl
TL04I	Hedgehog; Hobby; Little owl; Otter; Water shrew
TL04C	Barn owl; Brambling; Common tern; Cuckoo; Fieldfare; Golden plover; Goldfinch; Great white egret; Greenfinch; Grey partridge; Grey wagtail; Hobby; House martin; House sparrow; Jack snipe; Kingfisher; Lapwing; Linnet; Little egret; Little owl; Meadow pipit; Mistle thrush; Oystercatcher; Peregrine; Redwing; Reed bunting; Ring-necked parakeet; Sand martin; Siskin; Skylark; Snipe; Song thrush; Starling; Stock dove; Stonechat; Swallow; Swift; Tawny owl; Teal; White/Pied wagtail; Wigeon; Wren; Yellow wagtail; Yellowhammer

## Appendix B. Species lists and Condition Assessments

Grassland

### Species list

Common Name	Latin Name
Bristly ox tongue	<i>Helminthotheca echioides</i>
False oat grass	<i>Arrhenatherum elatius</i>
Scentless may weed	<i>Tripleurospermum inodorum</i>
Knotgrass	<i>Polygonum aviculare</i>
Greater plantain	<i>Plantago major</i>
Soft brome	<i>Bromus hordeaceus</i>
Cocksfoot	<i>Dactylis glomerata</i>
Spear thistle	<i>Cirsium vulgare</i>
Broad leaved dock	<i>Rumex obtusifolia</i>
Cow parsley	<i>Anthriscus sylvestris</i>
Nettle	<i>Urtica dioica</i>
Hogweed	<i>Heracleum sphondylium</i>
Timothy	<i>Phleum pratense</i>
White clover	<i>Trifolium repens</i>
Sorrel	<i>Rumex acetosa</i>
Yorkshire fog	<i>Holcus lanatus</i>
Perennial ryegrass	<i>Lolium perenne</i>
White head nettle	<i>Lamium album</i>
Catsear	<i>Hypochaeris radicata</i>
Meadow buttercup	<i>Ranunculus acris</i>
Creeping buttercup	<i>Ranunculus repens</i>
Medic	<i>Medicago lupulina</i>
Mallow	<i>Malva sylvestris</i>
Barren brome	<i>Anisantha sterilis</i>
Yarrow	<i>Achillea millefolium</i>
Meadow grass	<i>Poa sp.</i>
Goat beard	<i>Tragopogon pratensis</i>
Ribwort plantain	<i>Plantago lanceolata</i>



## Condition Assessment

Condition Assessment Criteria		Condition Achieved (Y/N)
1	There must be 6-8 species per m <sup>2</sup> . If a grassland has 9 or more species per m <sup>2</sup> it should be classified as a medium distinctiveness grassland habitat type. <b>NB - this criterion is essential for achieving moderate condition.</b>	Y
2	Sward height is varied (at least 20% of the sward is less than 7 cm and at least 20% is more than 7 cm) creating microclimates which provide opportunities for insects, birds and small mammals to live and breed.	N
3	Some scattered scrub (including bramble) may be present, but scrub accounts for less than 20% of total grassland area. Note - patches of shrubs with continuous (more than 90%) cover should be classified as the relevant scrub habitat type.	Y
4	Physical damage is evident in less than 5% of total grassland area. Examples of physical damage include excessive poaching, damage from machinery use or storage, erosion caused by high levels of access, or any other damaging management activities.	N
5	Cover of bare ground is between 1% and 10%, including localised areas (for example, a concentration of rabbit warrens).	Y
6	Cover of bracken less than 20%.	Y
7	There is an absence of invasive non-native species (as listed on Schedule 9 of WCA, 1981).	N
Passes 6 or 7 of 7 criteria including passing essential criterion 1		Good (3)
Passes 4 or 5 of 7 criteria; OR		
Passes 4 or 5 of 7 criteria including passing essential criterion 1		Moderate (2)
Passes 0, 1, 2 or 3 of 7 criteria; OR		
Passes 4, 5 or 6 of criteria but failing criterion 1		Poor (1)

## Scrub

### Species list

Common Name	Latin Name
Hawthorn	<i>Crataegus monogyna</i>
Elder	<i>Sambucus nigra</i>
Willow	<i>Salix</i> sp.
bramble	<i>Rubus fruticosus</i> agg.

## Condition Assessment

Condition Assessment Criteria		Condition Achieved (Y/N)
1	Habitat is representative of UKHab description (where in its natural range). There are at least three woody species, with no one species comprising more than 75% of the cover (except common juniper, sea buckthorn or box, which can be up to 100% cover).	Y

Condition Assessment Criteria		Condition Achieved (Y/N)
2	There is a good age range – all of the following are present: seedlings, young shrubs and mature shrubs.	N
3	There is an absence of invasive non-native species (as listed on Schedule 9 of WCA, 1981) and species indicative of sub-optimal condition make up less than 5% of ground cover.	N
4	The scrub has a well-developed edge with scattered scrub and tall grassland and/or herbs present between the scrub and adjacent habitat(s).	N
5	There are clearings, glades or rides present within the scrub, providing sheltered edges.	N
Passes 5 of 5 criteria                      Good (3) Passes 3 or 4 of 5 criteria              Moderate (2) Passes 0, 1 or 2 of 5 criteria          Poor (1)		

## Hedgerows

### Species list

Common Name	Latin Name
Hawthorn	<i>Crataegus monogyna</i>
Blackthorn	<i>Prunus spinosa</i>
elder	<i>Sambucus nigra</i>
Dog rose	<i>Rosa canina</i>
Sycamore	<i>Acer pseudoplatanus</i>
Ash	<i>Fraxinus excelsior</i>
Field maple	<i>Acer campestre</i>
Ivy	<i>Hedera helix</i>
Bramble	<i>Rubus fruticosus agg.</i>
Oak	<i>Quercus robur</i>
hop	<i>Humulus lupulus</i>

### Condition Assessment

Condition Assessment Criteria
<b>A1. Height</b> >1.5 m average along length
<b>A2. Width</b> >1.5 m average along length
<b>B1. Gap</b> Hedge base gap between ground and base of canopy 90% of length (unless 'line of trees')
<b>B2. Gap –</b> Hedge canopy continuity. Gaps make up 5 m
<b>C1. Undisturbed ground and perennial vegetation</b> >1 m width of undisturbed ground with perennial herbaceous vegetation for >90% of length measured from outer edge of hedgerow, and is present on one side of the hedge (at least)

<b>Condition Assessment Criteria</b>	
<b>C2. Undesirable perennial vegetation</b> Plant species indicative of nutrient enrichment of soils dominate	
<b>D1. Invasive and neophyte species</b> >90% of the hedgerow and undisturbed ground is free of invasive non-native and neophyte species	
<b>D2. Current damage</b> >90% of the hedgerow or undisturbed ground is free of damage caused by human activities	
<b>Additional criteria for hedge with trees</b>	
<b>E1. Tree Age</b> At least one mature tree per 30m stretch of hedgerow. A mature tree is one that is at least 2/3 expected fully mature height for the species.	
<b>E2. Tree Health</b> At least 95% of hedgerow trees are in a healthy condition (excluding veteran features valuable for wildlife). There is little or no evidence of an adverse impact on tree health by damage from livestock or wild animals, pests or diseases, or human activity.	
<b>Hedge</b> No more than 2 failures in total; AND No more than 1 in any functional group. No more than 4 failures in total; AND Does not fail both attributes in more than one functional group Fails a total of more than 4 attributes; OR Fails both attributes in more than one functional group	Good Moderate Poor
<b>Hedge with trees</b> No more than 2 failures in total; AND No more than 1 failure in any functional group No more than 5 failures in total; AND Does not fail both attributes in more than one functional group Fails a total of more than 5 attributes; OR Fails both attributes in more than one functional group	Good Moderate Poor

Hedge Number	Criteria										Cond
	A1	A2	B1	B2	C1	C2	D1	D2	E1	E2	
1	y	y	y	y	n	n	y	n	-	-	Mod
2	Y	Y	Y	N	N	N	Y	Y	-	-	Mod
3	y	y	n	n	n	n	y	y	y	y	Poor
4	y	y	y	y	n	n	y	y	n	y	Mod
5	y	y	n	y	n	n	y	n	-	-	Mod
6	y	y	y	n	n	n	y	n	-	-	Mod
7	y	y	n	n	n	n	y	y	-	-	Poor
8	y	y	n	n	n	n	y	y	-	-	Mod
9	y	y	y	y	n	n	y	y	-	-	Mod
10	y	y	n	n	n	n	y	y	-	-	Poor
11	y	y	y	y	n	n	y	y	-	-	Mod
12	y	y	Y	y	n	n	y	y	y	y	Mod
13	y	y	y	y	n	n	y	y	-	-	Mod
14	y	y	y	n	n	n	y	y	-	-	Mod

Hedge Number	Criteria										Cond
	A1	A2	B1	B2	C1	C2	D1	D2	E1	E2	
15	y	y	y	n	n	n	y	y	-	-	Mod
16	n	n	y	n	y	n	y	y	-	-	Mod
17	y	y	n	n	n	n	y	y	-	-	Poor
18	y	y	n	n	n	n	y	y	-	-	Poor
19	y	y	y	y	n	n	y	y	-	-	Mod
20	y	y	y	y	n	n	y	y	-	-	Mod
21	y	y	y	y	n	n	y	y	y	y	Mod
22	y	y	y	y	y	n	y	y	n	y	Mod
23	y	y	y	y	y	n	y	y	n	y	Mod
24	y	y	y	y	n	n	y	y	-	-	Mod
25	y	y	y	y	n	n	y	y	-	-	Mod

Tree line

### Species list

Common Name	Latin Name
Poplar	<i>Populus sp.</i>
Oak	<i>Quercus robur</i>
Ash	<i>Fraxinus excelsior</i>
Willow	<i>Salix sp.</i>
Field maple	<i>Acer campestre</i>
Sycamore	<i>Acer pseudoplatanus</i>
Elder	<i>Sambucus nigra</i>
Ivy	<i>Hedera helix</i>
Hawthorn	<i>Crataegus monogyna</i>
Elm	<i>Ulmus sp.</i>
Dog rose	<i>Rosa canina</i>

## Condition Assessment

Criteria		Condition Achieved (Y/N)
1	More than 70% of trees are native species.	Y
2	Tree canopy is predominantly continuous with gaps in canopy cover making up <10% of total area and no individual gap being >5 m wide.	Y
3	Includes one or more mature <sup>1</sup> or veteran <sup>2</sup> tree.	Y
4	There is an undisturbed naturally vegetated strip of at least 6 m on both sides to protect the line of trees from farming and other anthropogenic operations.	N
5	At least 95% of the trees are in a healthy condition (excluding veteran features valuable for wildlife). There is little or no evidence of an adverse impact on tree health by damage from livestock or wild animals, pests or diseases, or human activity.	Y
Passes 5 of 5 criteria Passes 3 or 4 of 5 criteria Passes 0, 1 or 2 of 5 criteria		Good Moderate Poor

## Ditches

### Condition Assessment

Criteria		Condition Achieved (Y/N)
1	The ditch is of good water quality, with clear water (low turbidity) indicating no obvious signs of pollution.	N
2	A range of emergent, submerged and floating leaved plants are present. As a guide >10 species of emergent, floating or submerged plants in a 20m ditch length.	N
3	There is less than 10% cover of filamentous algae and/or duckweed (these are signs of eutrophication).	Y
4	A fringe of marginal vegetation is present along more than 75% of the ditch.	N
5	Physical damage evident along less than 5% of the ditch, such as excessive poaching, damage from machinery use or storage, or any other damaging management activities.	Y
6	Sufficient water levels are maintained; as a guide a minimum summer depth of approximately 50cm in minor ditches and 1m in main drains.	N
7	Less than 10% of the ditch is heavily shaded.	Y
8	There is an absence of non-native plant and animal species.	Y
Passes 8 of 8 criteria Passes 6 or 7 of 8 criteria Passes 0, 1, 2, 3, 4 or 5 of 8 criteria		Good Moderate Poor

Headline Results

[Return to results menu](#)

On-site baseline	<i>Habitat units</i>	152.06
	<i>Hedgerow units</i>	23.31
	<i>River units</i>	4.42
On-site post-intervention <small>(Including habitat retention, creation &amp; enhancement)</small>	<i>Habitat units</i>	186.54
	<i>Hedgerow units</i>	0.00
	<i>River units</i>	3.06
On-site net % change <small>(Including habitat retention, creation &amp; enhancement)</small>	<i>Habitat units</i>	22.67%
	<i>Hedgerow units</i>	0.00%
	<i>River units</i>	-30.77%
Off-site baseline	<i>Habitat units</i>	0.00
	<i>Hedgerow units</i>	0.00
	<i>River units</i>	0.00
Off-site post-intervention <small>(Including habitat retention, creation &amp; enhancement)</small>	<i>Habitat units</i>	0.00
	<i>Hedgerow units</i>	0.00
	<i>River units</i>	0.00
Total net unit change <small>(including all on-site &amp; off-site habitat retention, creation &amp; enhancement)</small>	<i>Habitat units</i>	34.48
	<i>Hedgerow units</i>	-23.31
	<i>River units</i>	-1.36
Total on-site net % change plus off-site surplus <small>(including all on-site &amp; off-site habitat retention, creation &amp; enhancement)</small>	<i>Habitat units</i>	22.67%
	<i>Hedgerow units</i>	-100.00%
	<i>River units</i>	-30.77%
Trading rules Satisfied?	Yes ✓	

**A-1 Site Habitat Baseline**

Condense / Show Columns      Condense / Show Rows

Main Menu      Instructions

Ref	Habitats and areas			Distinctiveness		Condition		Strategic significance			Suggested action to address habitat losses	Ecological baseline Total habitat units	Retention category biodiversity value					
	Broad Habitat	Habitat Type	Area (hectares)	Distinctiveness	Score	Condition	Score	Strategic significance	Strategic significance	Strategic Significance multiplier			Area retained	Area enhanced	Baseline units retained	Baseline units enhanced	Area habitat lost	Units lost
1	Cropland	Cereal crops	63.97	Low	2	Condition Assessment N/A	1	Area/compensation not in local strategy/ no local strategy	Low Strategic Significance	1	Same distinctiveness or better habitat required ≥	127.94			0.00	0.00	63.97	127.94
2	Grassland	Modified grassland	5.9	Low	2	Moderate	2	Area/compensation not in local strategy/ no local strategy	Low Strategic Significance	1	Same distinctiveness or better habitat required ≥	23.60			0.00	0.00	5.90	23.60
3	Heathland and shrub	Mixed scrub	0.13	Medium	4	Poor	1	Area/compensation not in local strategy/ no local strategy	Low Strategic Significance	1	Same broad habitat or a higher distinctiveness habitat required (≥)	0.52			0.00	0.00	0.13	0.52

**A-2 Site Habitat Creation**

Condense / Show Columns      Condense / Show Rows

Main Menu      Instructions

Broad Habitat	Proposed habitat	Area (hectares)	Distinctiveness		Condition		Strategic significance			Post development/ post intervention habitats						Habitat units delivered	Assessor comments				
			Distinctiveness	Score	Condition	Score	Strategic significance	Strategic significance	Strategic position multiplier	Standard time to target condition/years	Habitat created in advance/years	Delay in starting habitat creation/years	Temporal multiplier		Difficulty multipliers						
													Standard or adjusted time to target condition	Final time to target condition/years	Final time to target multiplier	Standard difficulty of creation	Applied difficulty multiplier	Final difficulty of creation	Difficulty multiplier applied		
Urban	Developed land: sealed surface	28.6	V.Low	0	N/A - Other	0	Area/compensation not in local strategy/ no local strategy	Low Strategic Significance	1	0			Standard time to target condition applied	0	1.000	Low	Standard difficulty applied	Medium	0.67	0.00	buildings/roads/drives
Urban	Vegetated garden	12.25	Low	2	Condition Assessment N/A	1	Area/compensation not in local strategy/ no local strategy	Low Strategic Significance	1	1			Standard time to target condition applied	1	0.965	Low	Standard difficulty applied	Low	1	23.64	gardens/ornamental on plot planting
Woodland and forest	Other woodland: broadleaved	10	Medium	4	Moderate	2	Formally identified in local strategy	High strategic significance	1.15	15			Standard time to target condition applied	15	0.586	Low	Standard difficulty applied	Low	1	53.91	required for vale of marston
Heathland and shrub	Mixed scrub	4.57	Medium	4	Moderate	2	Formally identified in local strategy	High strategic significance	1.15	5			Standard time to target condition applied	5	0.837	Low	Standard difficulty applied	Low	1	35.18	required for vale of marston
Lakes	Ponds (Non- Priority Habitat)	1.2	Medium	4	Moderate	2	Area/compensation not in local strategy/ no local strategy	Low Strategic Significance	1	3			Standard time to target condition applied	3	0.899	Low	Standard difficulty applied	Low	1	8.63	
Grassland	Other neutral grassland	8.87	Medium	4	Moderate	2	Area/compensation not in local strategy/ no local strategy	Low Strategic Significance	1	5			Standard time to target condition applied	5	0.837	Low	Standard difficulty applied	Low	1	59.38	
Grassland	Modified grassland	3	Low	2	Poor	1	Area/compensation not in local strategy/ no local strategy	Low Strategic Significance	1	1			Standard time to target condition applied	1	0.965	Low	Standard difficulty applied	Low	1	5.79	
Urban	Developed land: sealed surface	1.51	V.Low	0	N/A - Other	0	Area/compensation not in local strategy/ no local strategy	Low Strategic Significance	1	0			Standard time to target condition applied	0	1.000	Low	Standard difficulty applied	Medium	0.67	0.00	





