

The scaling of this drawing cannot be assured

Revision \_\_\_\_\_ Date \_\_\_\_\_ Dwn \_\_\_\_\_ Ckd \_\_\_\_\_

### Legend

- Site Boundary
- Ancient Woodland #
- Existing Woodlands, Copses and Tree Belts ^
- Existing Scrub ^
- Existing Water Courses and Features ^
- Contours/Spot Heights (Metres AOD) ^
- Public Rights of Way \*
- National Trails # / Long Distance Walks ^
- Sustrans Cycle Route +
- Cycle Route ++
- Listed Buildings ~
- Registered Parks and Gardens ~
- Scheduled Monument ~
- Local Nature Reserve #
- Country Park #
- Bedford Local Plan ##
- Settlement Policy Area Boundary H24 E17 CP12
- Conservation Area
- Bedford River Valley Park AD26
- County Wildlife Site NE3
- Existing Cycle Route AD39
- Proposed Cycle Route AD39
- Forest of Marston Vale AD25
- Local Gap AD42
- Urban Open Space Gap AD43
- Green Infrastructure and Network Opportunity Zone AD24
- 2 Upper Great Ouse River Valley
- 3 Lower Great Ouse River Valley
- 4 Bedford to Milton Keynes - Marston Vale
- 5 Greensand Ridge Fringes
- 6 Bedford Northern Fringes

**FIGURE 1**  
 Project: Short's Park, Shortstown  
 Drawing Title: Site Context Plan

Date	21.07.2020	Scale	1:12,500 @A1 1:25,000 @A3	Drawn by	ML	Check by	WL
Project No	31550	Drawing No	LN-LP-01	Revision	-		

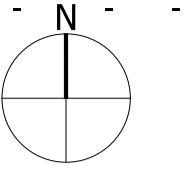
Sources:  
 - GIS Mapping  
 - Natural England GIS Data Set  
 - Historic England National Monument Record GIS Data Set  
 - County Councils - Definitive Map  
 - Sustrans National Cycle Network GIS Data  
 - Department of Transport Cycle Network Host  
 - Department for Communities and Local Government GIS Data  
 - District Councils - Local Plan Proposals Map Adopted  
 - County Councils - Landscape Character Assessment  
 - District Councils - Landscape Character Assessment  
 Data collected for constraints and analysis mapping is based on publicly available sources at the time of preparation inserted using the British National Grid and may itself not be accurate. Barton Willmore shall not be liable for the accuracy of data derived from external sources.

**BARTON WILLMORE**



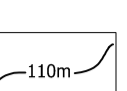

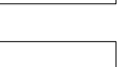
Town Planning • Master Planning & Urban Design • Architecture •  
 Landscape Planning & Design • Infrastructure & Environmental Planning •  
 Heritage • Graphic Communication •  
 Communications & Engagement • Development Economics

bartonwillmore.co.uk

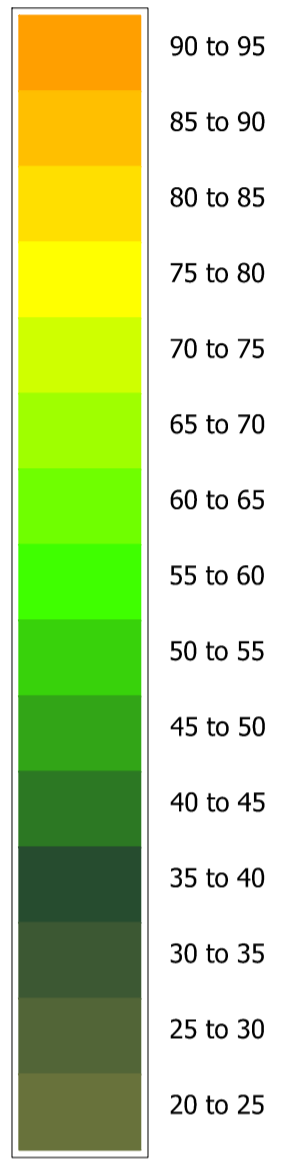
Offices at Birmingham Bristol Cambridge Cardiff Edinburg Glasgow Leeds London Manchester Newcastle Reading Southampton



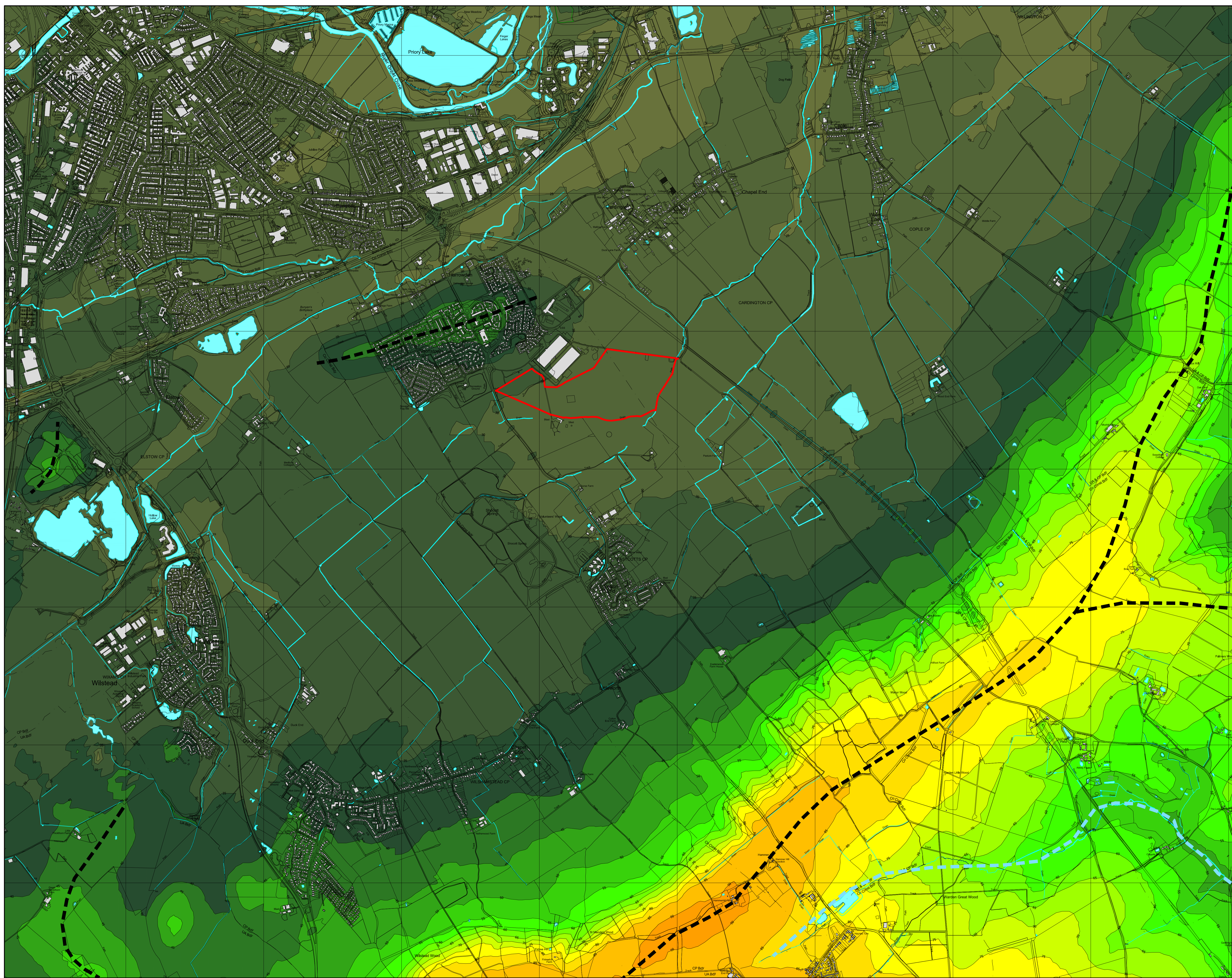
# Legend

-  Site Boundary
-  Existing Water Courses and Features ^
-  Contours/Spot Heights (Metres AOD) ^
-  Ridgelines
-  Valleys

## Elevation (m AOD) ^



Sources: ^ OS Mapping  
Data collected for constraints and analysis mapping is based on publicly available sources at the time of preparation inserted using the British National Grid and may itself not be accurate. Barton Willmore shall not be liable for the accuracy of data derived from external sources.



## FIGURE 2

Project  
**Shorts Park,  
Shortstow**  
Drawing Title  
**Topographical Features Plan**

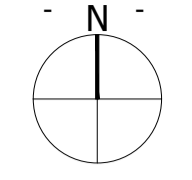
Date	21.07.2020	Scale	1:12,500 @A1 1:25,000 @A3	Drawn by	ML	Check by	WL
Project No	31550	Drawing No	LN-LP-02	Revision	-		



Town Planning • Master Planning & Urban Design • Architecture •  
Landscape Planning & Design • Infrastructure & Environmental Planning •  
Heritage • Graphic Communication •  
Communications & Engagement • Development Economics

bartonwillmore.co.uk 

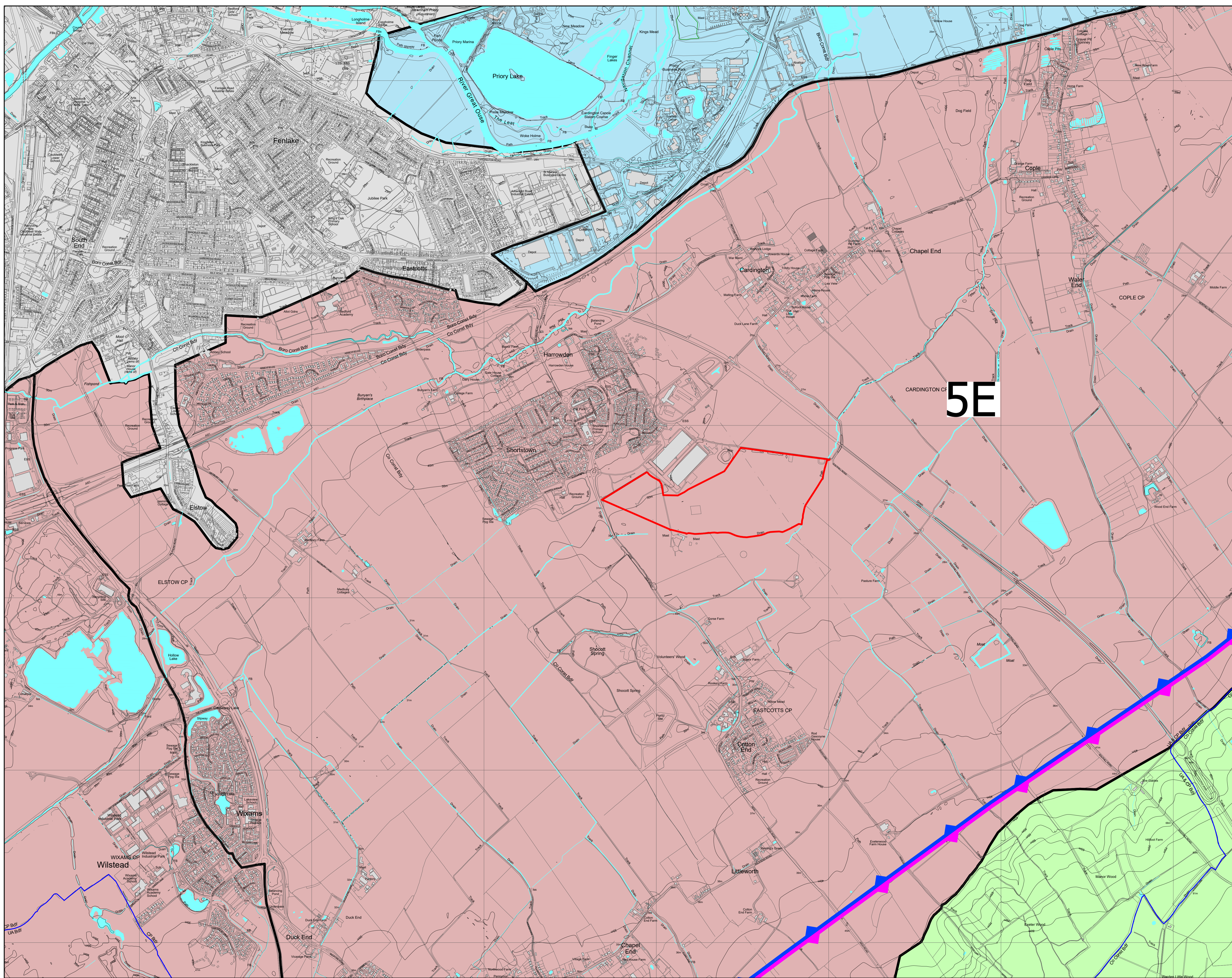
Offices at Birmingham Bristol Cambridge Cardiff Edinburgh Glasgow Leeds London Manchester Newcastle Reading Southampton



### Legend

- Site Boundary
- Ownership Boundary
- Existing Water Courses and Features ^
- Contours/Spot Heights (Metres AOD) #
- National Character Area (NCA) Profiles #
  - NCA 88: Bedfordshire and Cambridgeshire Claylands
  - NCA 90: Bedfordshire Greensand Ridge
- Bedford Borough and Central Bedfordshire Landscape Character Areas and Types \*\*/~/~
  - 4 - Clay Valleys
    - 4A: Great Ouse Clay Valleys
    - 4C: Upper Ivel Clay Valleys
  - 5 - Clay Vales
    - 5D: North Marston Clay Vales
    - 5E: East Marston Clay Vales
  - 6 - Wooded Greensand Ridge
    - 6B: Mid Greensand Ridge
  - Urban

Sources:  
 # OS Mapping  
 # Natural England GIS Data Set  
 \* Bedford Borough Landscape Character Assessment, May 2014  
 \*\* Central Bedfordshire Landscape Character Assessment, January 2015  
 Data collated for constraints and analysis mapping is based on publicly available sources at the time of preparation inserted using the British national Grid and may itself not be accurate. Barton Willmore shall not be liable for the accuracy of data derived from external sources.



**FIGURE 3**

Project  
**Short's Park,  
 Shortstown**  
 Drawing Title  
**Landscape Character Plan**

Date	Scale	Drawn by	Check by
21.07.2020	1:10,000 @A1 1:20,000 @A3	DK	WL
Project No	Drawing No	Revision	
31550	LN-LP-04	-	



Planning • Master Planning & Urban Design • Architecture •  
 Landscape Planning & Design • Environmental Planning • Graphic  
 Communication • Public Engagement • Development Economics

bartonwillmore.co.uk